



# **Nikon** **EL-NIKKOR** **ENLARGING LENSES...**

**ADVANCING THE FRONTIERS OF  
OPTICAL PRECISION**



# **Nikon**

© 1983 NIKON INC.

Garden City, New York 11530

Specifications subject to change without notice. Nikon and El-Nikkor are registered trademarks of Nikon Inc.

100M14464/07783

# Nikon EL-NIKKOR ENLARGING LENSES

represent the most advanced state of the lensmaker's art. Each Nikon El-Nikkor lens provides a level of performance unsurpassed in its class. Performance is, in fact, so high, that excellent results are possible even with inexpensive enlargers.



## COVERING POWER.

Nikon El-Nikkor lenses will fully cover the formats for which they were designed with superb resolution. This assures extreme sharpness within the entire magnification range of any given focal length. Prints of outstanding quality are the result of Nikon El-Nikkor's optical performance.

## ILLUMINATION ACROSS THE FIELD.

Nikon El-Nikkor lenses are designed to provide brilliant, even illumination corner-to-corner even at wide apertures. Evenness of illumination across the field holds a consistent level of brilliance right down to minimum apertures. The resulting prints are free from fall-off at the corners.

## CORRECTION FOR CHROMATIC ABERRATION.

The optical elements of Nikon El-Nikkor lenses are made of the same glass types as Apo-Nikkor lenses. This means that the performance levels of Nikon El-Nikkor are so high that they may be used for color separation work and, of course, for outstanding performance in all enlarging applications. Print quality is sharp, crisp and without annoying color fringing.

## NEAR UV CORRECTION.

While the human eye is not sensitive to ultraviolet light, both color and black and white papers are. Nikon El-Nikkor lenses are specifically designed for ultraviolet transmission through the use of special optical glass and matching optical coatings in the 350nm to 450nm range. This assures critical focusing which in turn produces superb sharpness and brilliance in the final printed image.

## IMAGE RESOLUTION.

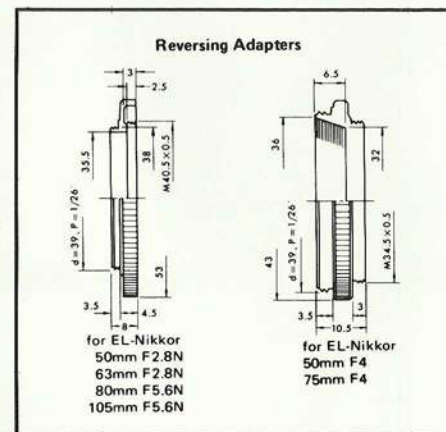
The inherently high resolution of Nikon El-Nikkor lenses is retained through a design that produces a completely flat field corner-to-corner. In addition, critical focus is maintained at all apertures. Optimum performance is achieved producing crisp, needle sharp images across the field and brilliant print quality.



## USING YOUR NIKON EL-NIKKOR AS A CAMERA LENS.

The Nikon El-Nikkor makes a superb taking lens when used at close working ratios.\* It is ideal for still life, extreme close-ups of all kinds, including flowers and every type of

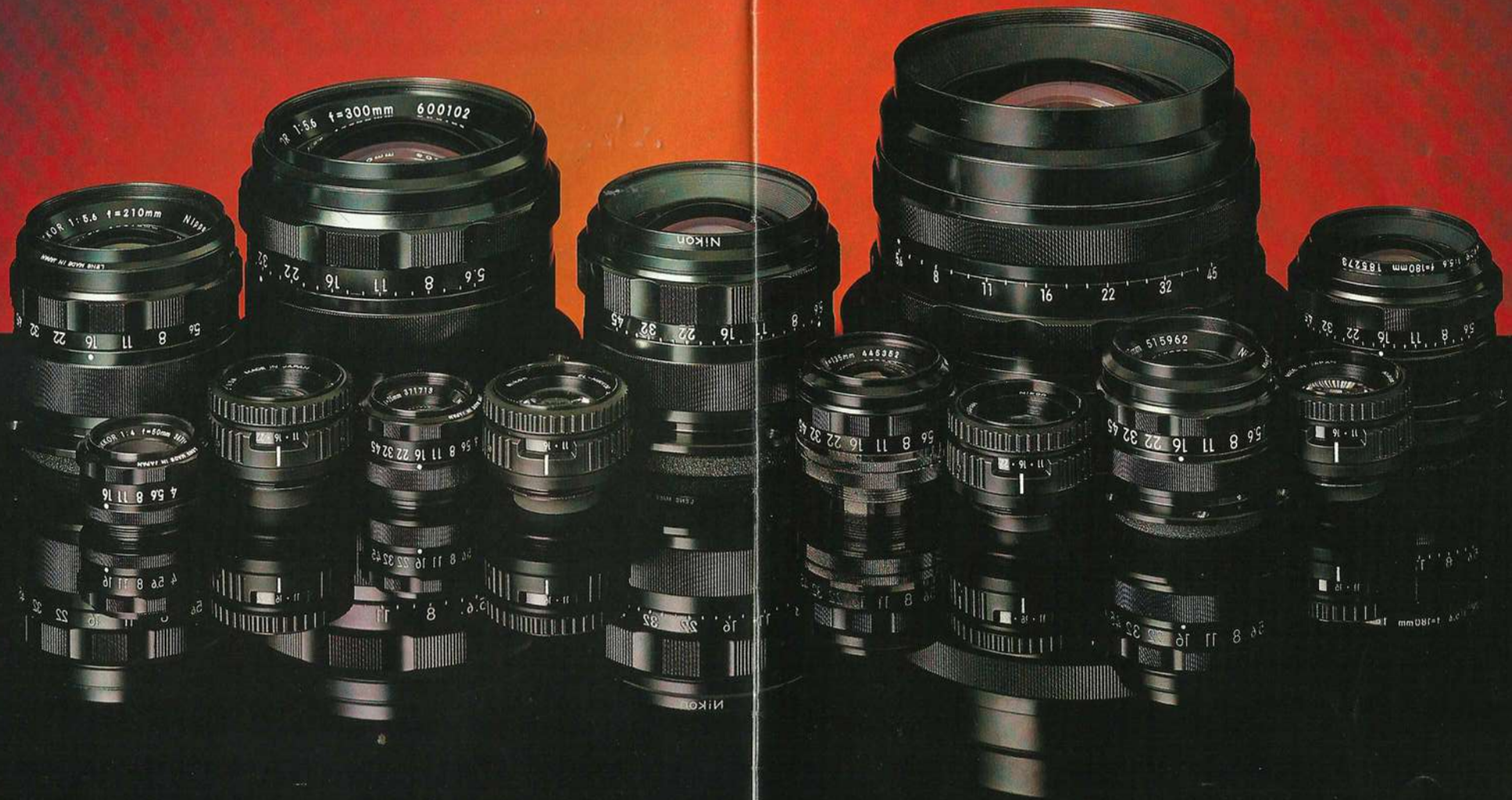
small-object photography. When the size of the image is larger than the size of the object, use of the Nikon Reverse Adapter assures critically sharp performance.



## THE NIKON REVERSE ADAPTER.

Best possible lens performance is achieved when the front element of the Nikon El-Nikkor faces the larger image. In ordinary enlarging work the front element faces the print which is larger than the negative. For reductions or photography where magnifications are more than 1X (subject smaller than image), the Nikon Reverse Adapter allows the lens to be used in the reverse position, giving dramatically improved performance. Nikon El-Nikkor lenses of a 135mm focal length and longer, have the reverse adapter built into the front of the lens.

The full range of Nikon EI-Nikkor lenses covers all existing popular formats from 35mm to 11 x 14 inches. Each Nikon EI-Nikkor is optimized for the best possible magnification range for the format being used. This assures superb performance with both resolution and illumination across the field unsurpassed in its class. Performance is so high in fact, that the most critical color work, including color separations, may be made with total confidence.





## 50mmF2.8N

Focal length	52.1mm
Minimum f/stop	f/16
Lens construction	4 - 6
Standard magnification	8X
Usable magnification range	2X ~ 20X
Covering power	46°
Correction wavelength range	380 ~ 700m $\mu$
Format size	1 in. x 1.5 in. (24 x 36mm)
Max. negative diagonal	1.7 in. (43.2mm $\emptyset$ )
Weight	3.7 oz. (105g)
Length (a)	1.5 in. (39mm)
Diameter (b)	2.0 in. (51mm)
Front mount size (dia. x pitch) (c)	Not applicable
Attachment size (dia. x pitch) (d)	40.5mm $\emptyset$ x 0.5mm
Rear mount size (dia. x pitch) (e)	39mm $\emptyset$ x 1/26 in.
Flange diameter (f)	Not applicable



## 50mmF4

Focal length	51.6mm
Minimum f/stop	f/16
Lens construction	3 - 4
Standard magnification	8X
Usable magnification range	2X ~ 20X
Covering power	46°
Correction wavelength range	380 ~ 700m $\mu$
Format size	1 in. x 1.5 in. (24 x 36mm)
Max. negative diagonal	1.7 in. (43.2mm $\emptyset$ )
Weight	3.5 oz. (100g)
Length (a)	1.1 in. (28mm)
Diameter (b)	1.8 in. (44.5mm)
Front mount size (dia. x pitch) (c)	Not applicable
Attachment size (dia. x pitch) (d)	34.5mm $\emptyset$ x 0.5mm
Rear mount size (dia. x pitch) (e)	39mm $\emptyset$ x 1/26 in.
Flange diameter (f)	Not applicable

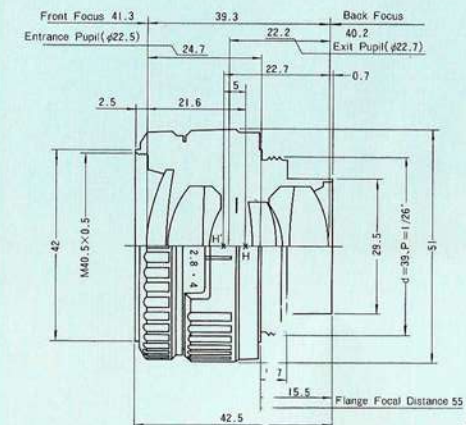
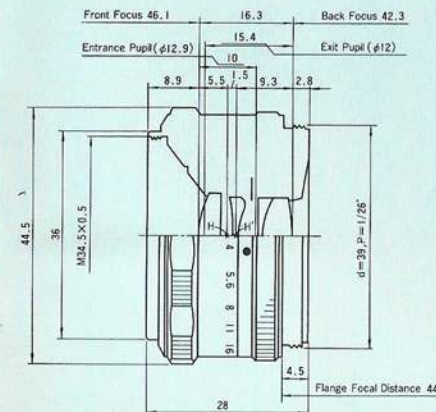
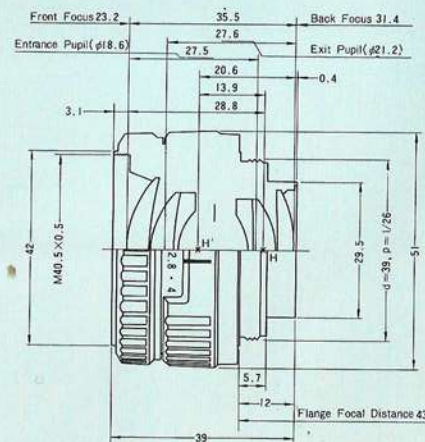
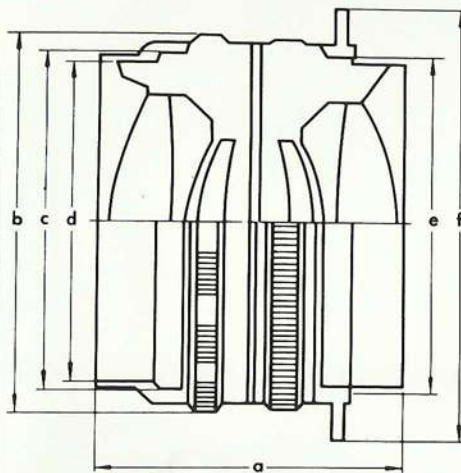


## 63mmF2.8N

Focal length	62.9mm
Minimum f/stop	f/16
Lens construction	4 - 6
Standard magnification	8X
Usable magnification range	2X ~ 20X
Covering power	46°
Correction wavelength range	380 ~ 700m $\mu$
Format size	1.3 in. x 1.8 in. (32 x 45mm)
Max. negative diagonal	2.2 in. (55.2mm $\emptyset$ )
Weight	4.2 oz. (120g)
Length (a)	1.7 in. (42.5mm)
Diameter (b)	2.0 in. (51mm)
Front mount size (dia. x pitch) (c)	Not applicable
Attachment size (dia. x pitch) (d)	40.5mm $\emptyset$ x 0.5mm
Rear mount size (dia. x pitch) (e)	39mm $\emptyset$ x 1/26 in.
Flange diameter (f)	Not applicable

### REFERENCE TO KEY LETTERS.

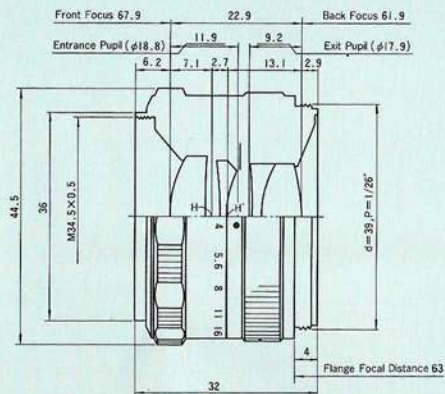
Use this chart as a guide to lens dimensions and distances shown in the technical specifications and diagrams for each lens.





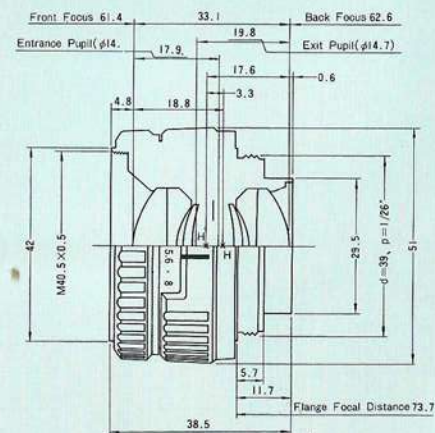
## 75mmF4

Focal length	75mm
Minimum f/stop	f/45
Lens construction	3 - 4
Standard magnification	5X
Usable magnification range	2X ~ 10X
Covering power	52°
Correction wavelength range	380 ~ 700m $\mu$
Format size	2.4 in. x 2.4 in. (60 x 60mm)
Max. negative diagonal	3.1 in. (80mm $\phi$ )
Weight	2.8 oz. (80g)
Length (a)	1.3 in. (32mm)
Diameter (b)	1.8 in. (44.5mm)
Front mount size (dia. x pitch) (c)	Not applicable
Attachment size (dia. x pitch) (d)	34.5mm $\phi$ x 0.5mm
Rear mount size (dia. x pitch) (e)	29mm $\phi$ x 1/26 in.
Flange diameter (f)	Not applicable



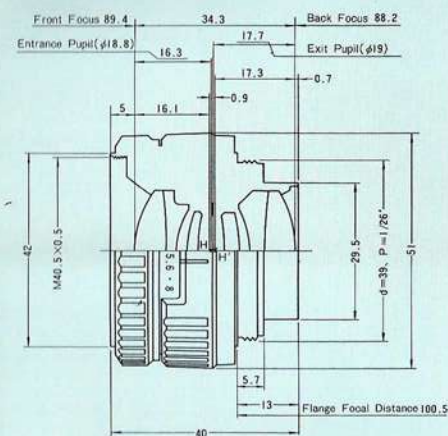
## 80mmF5.6N

Focal length	80.1mm
Minimum f/stop	f/32
Lens construction	4 - 6
Standard magnification	5X
Usable magnification range	2X ~ 15X
Covering power	56°
Correction wavelength range	380 ~ 700m $\mu$
Format size	2.4 in. x 2.8 in. (60 x 70mm)
Max. negative diagonal	3.7 in. (95mm $\phi$ )
Weight	3.5 oz. (100g)
Length (a)	1.5 in. (38.5mm)
Diameter (b)	2.0 in. (51mm)
Front mount size (dia. x pitch) (c)	Not applicable
Attachment size (dia. x pitch) (d)	40.5mm $\phi$ x 0.5mm
Rear mount size (dia. x pitch) (e)	39mm $\phi$ x 1/26 in.
Flange diameter (f)	Not applicable



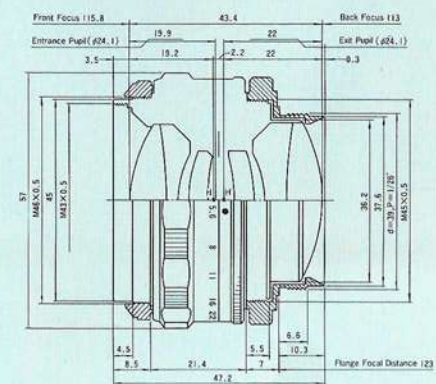
## 105mmF5.6N

Focal length	105.5mm
Minimum f/stop	f/32
Lens construction	4 - 6
Standard magnification	5X
Usable magnification range	2X ~ 10X
Covering power	51°
Correction wavelength range	380 ~ 700m $\mu$
Format size	2.4 in. x 3.5 in. (60 x 90mm)
Max. negative diagonal	4.7 in. (120mm $\phi$ )
Weight	3.9 oz. (110g)
Length (a)	1.6 in. (40mm)
Diameter (b)	2.0 in. (51mm)
Front mount size (dia. x pitch) (c)	Not applicable
Attachment size (dia. x pitch) (d)	40.5mm $\phi$ x 0.5mm
Rear mount size (dia. x pitch) (e)	39mm $\phi$ x 1/26 in.
Flange diameter (f)	Not applicable



## 135mmF5.6

Focal length	135mm
Minimum f/stop	f/45
Lens construction	4 - 6
Standard magnification	5X
Usable magnification range	2X ~ 10X
Covering power	54°
Correction wavelength range	380 ~ 700m $\mu$
Format size	4 in. x 5 in. (90 x 120mm)
Max. negative diagonal	6.3 in. (160mm $\phi$ )
Weight	9.2 oz. (260g)
Length (a)	1.9 in. (47.2mm)
Diameter (b)	2.2 in. (57mm)
Front mount size (dia. x pitch) (c)	46mm $\phi$ x 0.5mm
Attachment size (dia. x pitch) (d)	43mm $\phi$ x 0.5mm
Rear mount size (dia. x pitch) (e)	39mm $\phi$ x 1/26 in. 45mm $\phi$ x 0.5mm
Flange diameter (f)	Not applicable





## 150mmF5.6

Focal length	150mm
Minimum f/stop	f/45
Lens construction	4 - 6
Standard magnification	4X
Usable magnification range	2X ~ 8X
Covering power	54°
Correction wavelength range	380 ~ 700mμ
Format size	4 in. x 5 in. (100 x 130mm)
Max. negative diagonal	7.5 in. (190mmø)
Weight	10.6 oz. (300g)
Length (a)	2.2 in. (55.5mm)
Diameter (b)	2.4 in. (62mm)
Front mount size (dia. x pitch) (c)	53mmø x 0.75mm
Attachment size (dia. x pitch) (d)	47mmø x 0.5mm
Rear mount size (dia. x pitch) (e)	53mmø x 0.75mm
Flange diameter (f)	74mm



## 180mmF5.6

Focal length	180mm
Minimum f/stop	f/45
Lens construction	4 - 6
Standard magnification	4X
Usable magnification range	2X ~ 8X
Covering power	54°
Correction wavelength range	380 ~ 700mμ
Format size	5 in. x 7 in. (130 x 180mm)
Max. negative diagonal	9.1 in. (230mmø)
Weight	15.2 oz. (430g)
Length (a)	2.5 in. (62.6mm)
Diameter (b)	3.0 in. (76mm)
Front mount size (dia. x pitch) (c)	62mmø x 1mm
Attachment size (dia. x pitch) (d)	58mmø x 75mm
Rear mount size (dia. x pitch) (e)	62mmø x 1mm
Flange diameter (f)	88mm



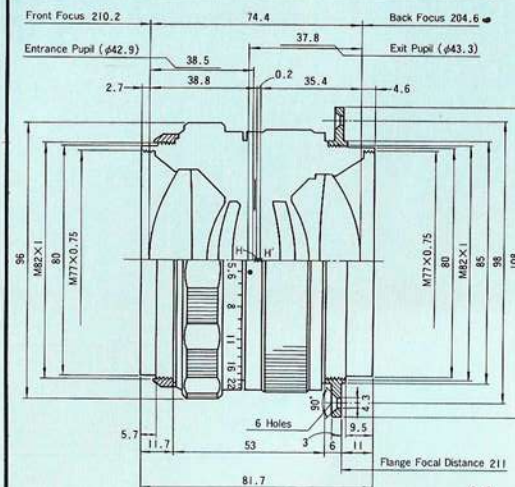
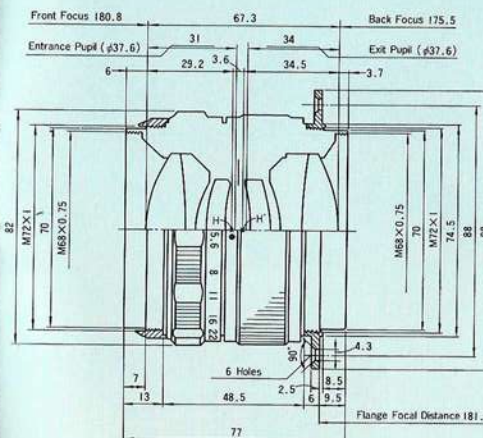
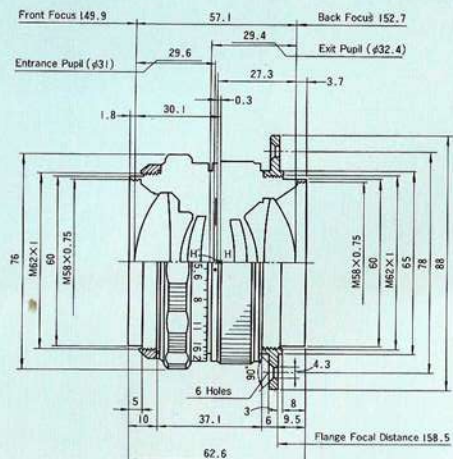
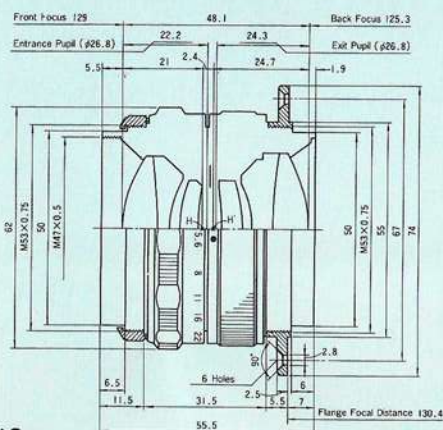
## 210mmF5.6

Focal length	210mm
Minimum f/stop	f/45
Lens construction	4 - 6
Standard magnification	4X
Usable magnification range	2X ~ 8X
Covering power	54°
Correction wavelength range	380 ~ 700mμ
Format size	5 in. x 7 in. (130 x 210mm)
Max. negative diagonal	10.6 in. (270mmø)
Weight	21.2 oz. (600g)
Length (a)	3.0 in. (77mm)
Diameter (b)	3.2 in. (82mm)
Front mount size (dia. x pitch) (c)	72mmø x 1mm
Attachment size (dia. x pitch) (d)	68mmø x 0.75mm
Rear mount size (dia. x pitch) (e)	72mmø x 1mm
Flange diameter (f)	98mm



## 240mmF5.6

Focal length	240mm
Minimum f/stop	f/45
Lens construction	4 - 6
Standard magnification	3X
Usable magnification range	1X ~ 6X
Covering power	54°
Correction wavelength range	380 ~ 700mμ
Format size	8 in. x 10 in. (180 x 240mm)
Max. negative diagonal	13.0 in. (330mmø)
Weight	32.1 oz. (910g)
Length (a)	3.2 in. (81.7mm)
Diameter (b)	3.8 in. (96mm)
Front mount size (dia. x pitch) (c)	82mmø x 1mm
Attachment size (dia. x pitch) (d)	77mmø x 0.75mm
Rear mount size (dia. x pitch) (e)	82mmø x 1mm
Flange diameter (f)	108mm





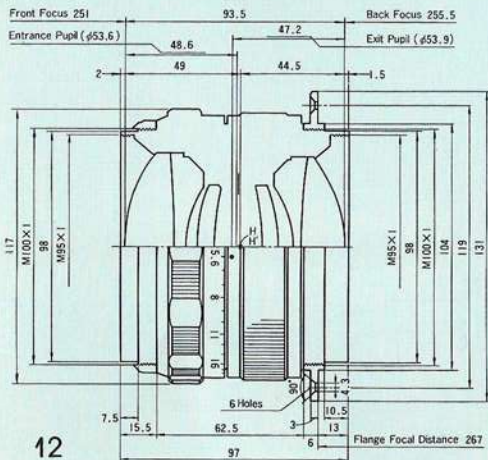
## 300mmF5.6

Focal length	300mm
Minimum f/stop	f/45
Lens construction	4 - 6
Standard magnification	2X
Usable magnification range	1X ~ 4X
Covering power	52°
Correction wavelength range	380 ~ 700nm
Format size	10 in. x 12 in. (270 x 330mm)
Max. negative diagonal	17.3 in. (440mm $\phi$ )
Weight	54.7 oz. (1550g)
Length (a)	3.8 in. (97mm)
Diameter (b)	4.6 in. (117mm)
Front mount size (dia. x pitch) (c)	100mm $\phi$ x 1mm
Attachment size (dia. x pitch) (d)	95mm $\phi$ x 1mm
Rear mount size (dia. x pitch) (e)	100mm $\phi$ x 1mm
Flange diameter (f)	131mm

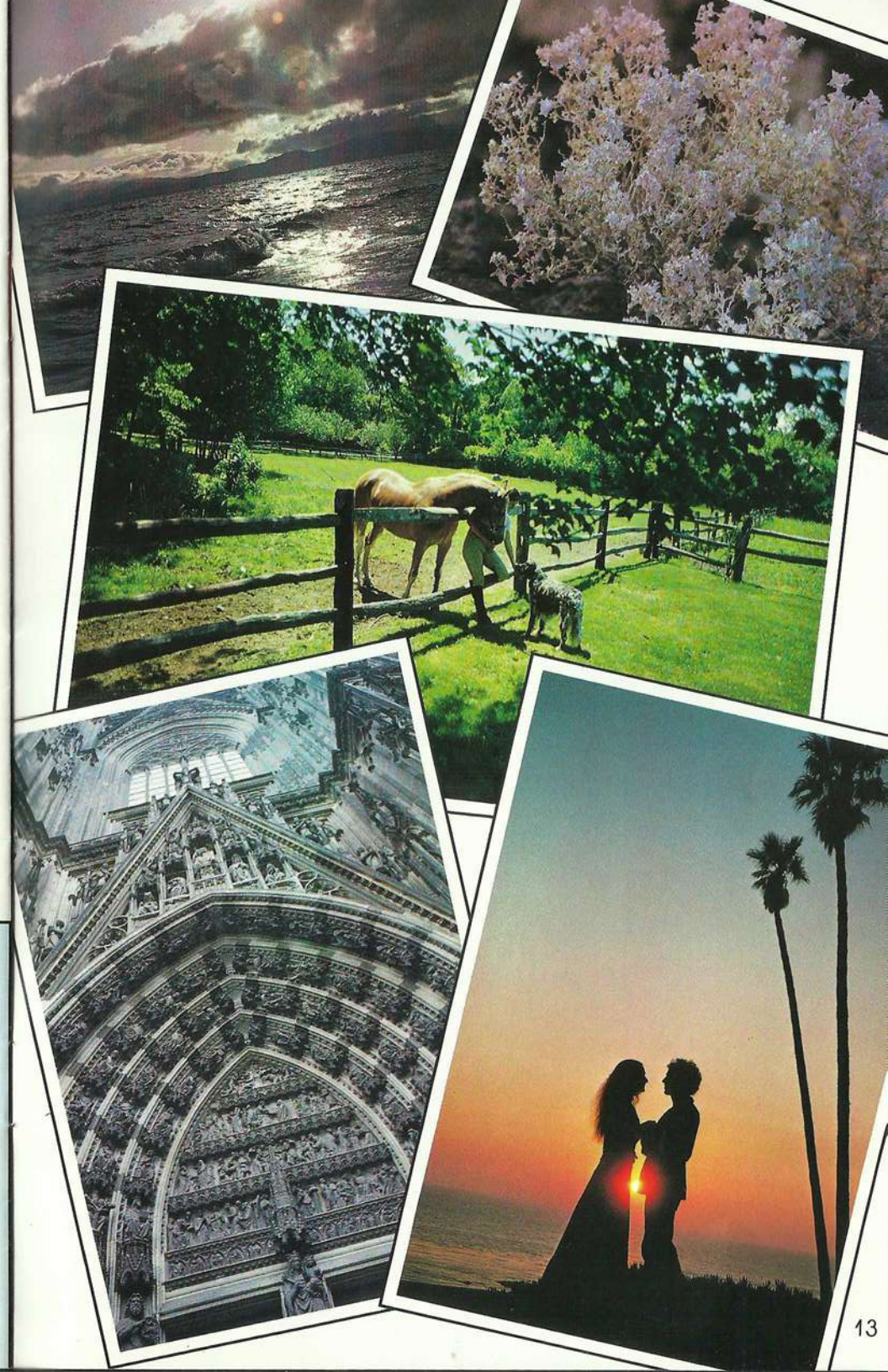
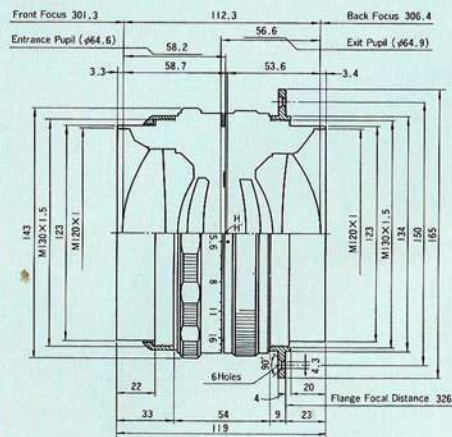


## 360mmF5.6

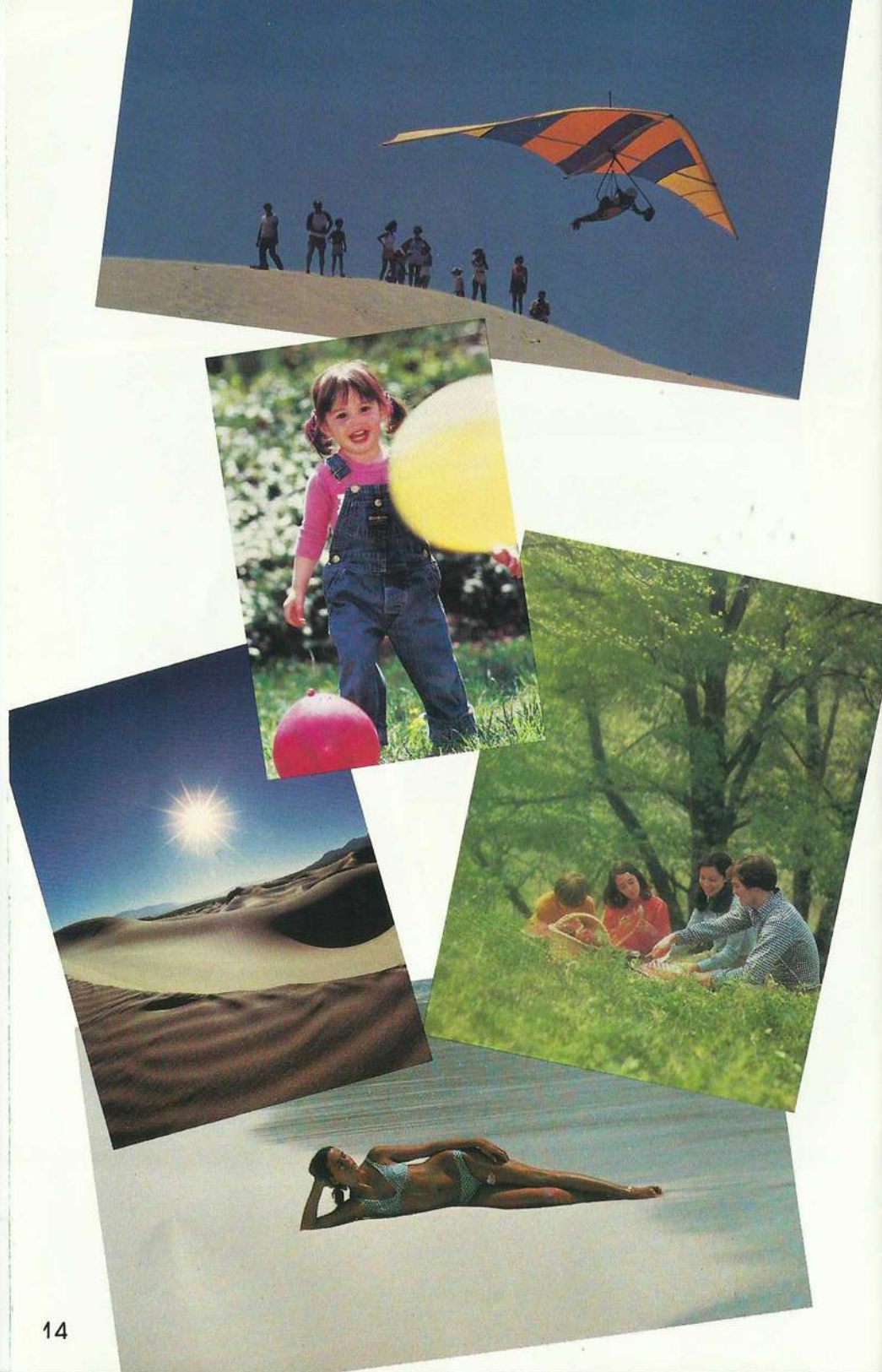
Focal length	360mm
Minimum f/stop	f/45
Lens construction	4 - 6
Standard magnification	2X
Usable magnification range	1X ~ 4X
Covering power	52°
Correction wavelength range	380 ~ 700nm
Format size	11 in. x 14 in. (300 x 400mm)
Max. negative diagonal	19.7 in. (500mm $\phi$ )
Weight	95.2 oz. (2700g)
Length (a)	4.7 in. (119mm)
Diameter (b)	5.6 in. (143mm)
Front mount size (dia. x pitch) (c)	130mm $\phi$ x 1.5mm
Attachment size (dia. x pitch) (d)	120mm $\phi$ x 1mm
Rear mount size (dia. x pitch) (e)	130mm $\phi$ x 1.5mm
Flange diameter (f)	165mm



12



13



	50mmF2.8N	50mmF4	63mmF2.8N	75mmF4	80mmF5.6N	105mmF5.6N	135mmF5.6
<b>Focal length</b>	52.1mm	51.6mm	62.9mm	75mm	80.1mm	105.5mm	135mm
<b>Minimum f/stop</b>	f/16	f/16	f/16	f/45	f/32	f/32	f/45
<b>Lens construction (group-element)</b>	4-6	3-4	4-6	3-4	4-6	4-6	4-6
<b>Standard magnification</b>	8X	8X	8X	5X	5X	5X	5X
<b>Usable magnification range</b>	2X ~ 20X	2X ~ 20X	2X ~ 20X	2X ~ 10X	2X ~ 15X	2X ~ 10X	2X ~ 10X
<b>Covering power</b>	46°	46°	46°	52°	56°	51°	54°
<b>Correction wavelength range</b>	380 ~ 700nm	380 ~ 700nm	380 ~ 700nm	380 ~ 700nm	380 ~ 700nm	380 ~ 700nm	380 ~ 700nm
<b>Max. neg. diagonal</b>	43.2mm∅	43.2mm∅	55.2mm∅	80 mm∅	95mm∅	120mm∅	160mm∅
<b>Format size</b>	24 x 36mm	24 x 36mm	32 x 45mm	60 x 60mm	60 x 70mm	60 x 90mm	90 x 120mm (4 x 5 in.)
<b>Weight</b>	105g	100g	120g	80g	100g	110g	260g
<b>Length</b>	39mm	28mm	42.5mm	32mm	38.5mm	40mm	47.2mm
<b>Diameter</b>	51mm	44.5mm	51mm	44.5mm	51mm	51mm	57mm
<b>Front mount size (dia. x pitch)</b>	N/A	N/A	N/A	N/A	N/A	N/A	46mm∅ x 0.5mm
<b>Attachment size (dia. x pitch)</b>	40.5mm∅ x 0.5mm	34.5mm∅ x 0.5mm	40.5mm∅ x 0.5mm	34.5mm∅ x 0.5mm	40.5mm∅ x 0.5mm	40.5mm∅ x 0.5mm	43mm∅ x 0.5mm
<b>Rear mount size (dia. x pitch)</b>	39mm∅ x 1/26"	39mm∅ x 1/26"	39mm∅ x 1/26"	39mm∅ x 1/26"	39mm∅ x 1/26"	39mm∅ x 1/26"	39mm∅ x 1/26" 45mm∅ x 0.5mm
<b>Flange diameter</b>	N/A	N/A	N/A	N/A	N/A	N/A	N/A

	150mmF5.6	180mmF5.6	210mmF5.6	240mmF5.6	300mmF5.6	360mmF5.6
<b>Focal length</b>	150mm	180mm	210mm	240mm	300mm	360mm
<b>Minimum f/stop</b>	f/45	f/45	f/45	f/45	f/45	f/45
<b>Lens construction (group-element)</b>	4-6	4-6	4-6	4-6	4-6	4-6
<b>Standard magnification</b>	4X	4X	4X	3X	2X	2X
<b>Usable magnification range</b>	2X ~ 8X	2X ~ 8X	2X ~ 8X	1X ~ 6X	1X ~ 4X	1X ~ 4X
<b>Covering power</b>	54°	54°	54°	54°	52°	52°
<b>Correction wavelength range</b>	380 ~ 700nm	380 ~ 700nm	380 ~ 700nm	380 ~ 700nm	380 ~ 700nm	380 ~ 700nm
<b>Max. neg. diagonal</b>	190mm∅	230mm∅	270mm∅	330mm∅	440mm∅	500mm∅
<b>Format size</b>	100 x 130mm (4 x 5 in.)	130 x 180mm (5 x 7 in.)	130 x 210mm (5 x 7 in.)	180 x 240mm (8 x 10 in.)	270 x 330mm (10 x 12 in.)	300 x 400mm (11 x 14 in.)
<b>Weight</b>	300g	430g	600g	910g	1550g	2700g
<b>Length</b>	55.5mm	62.6mm	77mm	81.7mm	97mm	119mm
<b>Diameter</b>	62mm	76mm	82mm	96mm	117mm	143mm
<b>Front mount size (dia. x pitch)</b>	53mm∅ x 0.75mm	62mm∅ x 1mm	72mm∅ x 1mm	82mm∅ x 1mm	100mm∅ x 1mm	130mm∅ x 1.5mm
<b>Attachment size (dia. x pitch)</b>	47mm∅ x 0.5mm	58mm∅ x 0.75mm	68mm∅ x 0.75mm	77mm∅ x 0.75mm	95mm∅ x 1mm	120mm∅ x 1mm
<b>Rear mount size (dia. x pitch)</b>	53mm∅ x 0.75mm	62mm∅ x 1mm	72mm∅ x 1mm	82mm∅ x 1mm	100mm∅ x 1mm	130mm∅ x 1.5mm
<b>Flange diameter</b>	74mm	88mm	98mm	108mm	131mm	165mm

N/A — Not applicable

**Special notes on lens usage.**

Special attention should be paid to the size and the outline of the mounts of both the enlarger and lens to assure that mounting has been completed properly.

